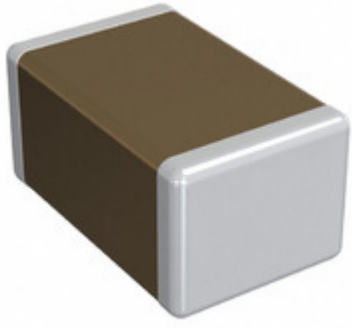


GQM2195C2E1R0BB12D



Part Number: [GQM2195C2E1R0BB12D](#)

Manufacturer: [Murata Electronics](#)

Description: CAP CER 1PF 250V C0G/NP0 0805

Data sheet: [PDF Chip Monolithic Ceramic Caps Part Numbering](#)
[PDF GQM2195C2E1R0BB12 Ref Sheet](#)
[PDF Chip Monolithic Ceramic Caps Catalog](#)

RoHS Status: Lead free / RoHS Compliant

Ship From: Hong Kong

Shipment Way: DHL/Fedex/TNT/UPS/EMS

Images are for reference only.
See Product Specifications for product details.
Buy GQM2195C2E1R0BB12D with confidence from Components-Store.com, 1 Year Warranty

[Request For Quotation](#)

PRODUCT PARAMETER

| | |
|---|---|
| Part Number | GQM2195C2E1R0BB12D |
| Manufacturer | Murata Electronics |
| Description | CAP CER 1PF 250V C0G/NP0 0805 |
| Lead Free Status / RoHS Status | Lead free / RoHS Compliant |
| Quantity Available | 111447 pcs |
| Product Photo | GQM2195C2E1R0BB12D-001.jpg , GQM2195C2E1R0BB12D-002.jpg |
| Category | Capacitors |
| Voltage - Rated | 250V |
| Tolerance | ±0.1pF |
| Thickness (Max) | 0.039" (1.00mm) |
| Temperature Coefficient | C0G, NP0 |
| Size / Dimension | 0.079" L x 0.049" W (2.00mm x 1.25mm) |
| Series | GQM |
| Ratings | - |
| Packaging | Original-Reel® |
| Package / Case | 0805 (2012 Metric) |
| Other Names | 490-5280-6 |
| Operating Temperature | -55°C ~ 125°C |
| Mounting Type | Surface Mount, MLCC |
| Moisture Sensitivity Level (MSL) | 1 (Unlimited) |
| Lead Style | - |
| Lead Spacing | - |
| Lead Free Status / RoHS Status | Lead free / RoHS Compliant |
| Height - Seated (Max) | - |
| Features | High Q, Low Loss |
| Detailed Description | 1pF ±0.1pF 250V Ceramic Capacitor C0G, NP0 0805 (2012 Metric) |
| Capacitance | 1pF |
| Applications | RF, Microwave, High Frequency |

Components-Store.com is a Reliable Stocking Distributor of Electronic Components. We specialize in all Murata Electronics series electronic components. We have 111447 pieces of Murata Electronics GQM2195C2E1R0BB12D in stock available now. Request a quote from electronics components distributor at Components-Store.com, our sales team will contact you within 24 hours.
RFQ Email: info@Components-Store.com

RELATED PRODUCTS

| | | | |
|--|---|---|---------------------|
| | Part#: GQM2195C2E1R2CB12J Description: CAP CER 1.2PF 250V NP0 0805 | Manufacturers: Murata Electronics In Stock: 265307 | RFQ |
| | Part#: GQM2195C2E1R2CB12D Description: CAP CER 1.2PF 250V NP0 0805 | Manufacturers: Murata Electronics In Stock: 259019 | RFQ |
| | Part#: GQM2195C2E1R2WB12D Description: CAP CER 1.2PF 250V NP0 0805 | Manufacturers: Murata Electronics In Stock: 85470 | RFQ |
| | Part#: GQM2195C2E151GB12D Description: CAP CER 150PF 250V NP0 0805 | Manufacturers: Murata Electronics In Stock: 78919 | RFQ |
| | Part#: GQM2195C2E160JB12D Description: CAP CER 16PF 250V NP0 0805 | Manufacturers: Murata Electronics In Stock: 162117 | RFQ |
| | Part#: GQM2195C2E180GB12D Description: CAP CER 18PF 250V NP0 0805 | Manufacturers: Murata Electronics In Stock: 76508 | RFQ |
| | Part#: GQM2195C2E1R0CB12D Description: CAP CER 1PF 250V NP0 0805 | Manufacturers: Murata Electronics In Stock: 263410 | RFQ |
| | Part#: GQM2195C2E1R1CB12D Description: CAP CER 1.1PF 250V NP0 0805 | Manufacturers: Murata Electronics In Stock: 277341 | RFQ |
| | Part#: GQM2195C2E1R1WB12D Description: CAP CER 1.1PF 250V NP0 0805 | Manufacturers: Murata Electronics In Stock: 90113 | RFQ |
| | Part#: GQM2195C2E1R2BB12D Description: CAP CER 1.2PF 250V C0G/NP0 0805 | Manufacturers: Murata Electronics In Stock: 102564 | RFQ |
| | Part#: GQM2195C2E180JB12D Description: CAP CER 18PF 250V C0G/NP0 0805 | Manufacturers: Murata Electronics In Stock: 170383 | RFQ |
| | Part#: GQM2195C2E150GB12D Description: CAP CER 15PF 250V NP0 0805 | Manufacturers: Murata Electronics In Stock: 87546 | RFQ |
| | Part#: GQM2195C2E180FB12D Description: CAP CER 18PF 250V NP0 0805 | Manufacturers: Murata Electronics In Stock: 56042 | RFQ |
| | Part#: GQM2195C2E1R1BB12D Description: CAP CER 1.1PF 250V NP0 0805 | Manufacturers: Murata Electronics In Stock: 161243 | RFQ |
| | Part#: GQM2195C2E180FB12J Description: CAP CER 18PF 250V NP0 0805 | Manufacturers: Murata Electronics In Stock: 69074 | RFQ |
| | Part#: GQM2195C2E150JB12D Description: CAP CER 15PF 250V C0G/NP0 0805 | Manufacturers: Murata Electronics In Stock: 183108 | RFQ |
| | Part#: GQM2195C2E1R0WB12D Description: CAP CER 1PF 250V NP0 0805 | Manufacturers: Murata Electronics In Stock: 96884 | RFQ |
| | Part#: GQM2195C2E151JB12D Description: CAP CER 150PF 250V NP0 0805 | Manufacturers: Murata Electronics North America In Stock: 259370 | RFQ |
| | Part#: GQM2195C2E1R3BB12D Description: CAP CER 1.3PF 250V NP0 0805 | Manufacturers: Murata Electronics In Stock: 163803 | RFQ |
| | Part#: GQM2195C2E160GB12D Description: CAP CER 16PF 250V NP0 0805 | Manufacturers: Murata Electronics In Stock: 84893 | RFQ |

Related keywords for GQM2195C2E1R0BB12D

| | | | |
|---------------------------------------|--------------------------------|----------------------------------|----------------------------------|
| Murata Electronics GQM2195C2E1R0BB12D | GQM2195C2E1R0BB12D distributor | GQM2195C2E1R0BB12D supplier | GQM2195C2E1R0BB12D price |
| GQM2195C2E1R0BB12D download datasheet | GQM2195C2E1R0BB12D datasheet | GQM2195C2E1R0BB12D stock | buy GQM2195C2E1R0BB12D |
| Murata Electronics GQM2195C2E1R0BB12D | MURATA GQM2195C2E1R0BB12D | Murata Electronics North America | TOKO / Murata GQM2195C2E1R0BB12D |

